



TBi ArcVisor^{Plus} Autodarkening Welding Helmet

For MIG/MAG-, TIG-, Plasma welding and Plasma cutting

Dark shade adjustable from DIN 9 – 13

Highest optical grade filter and extra large viewing area

Technical data

TBi ArcVisor^{Plus} - autodarkening welding helmet

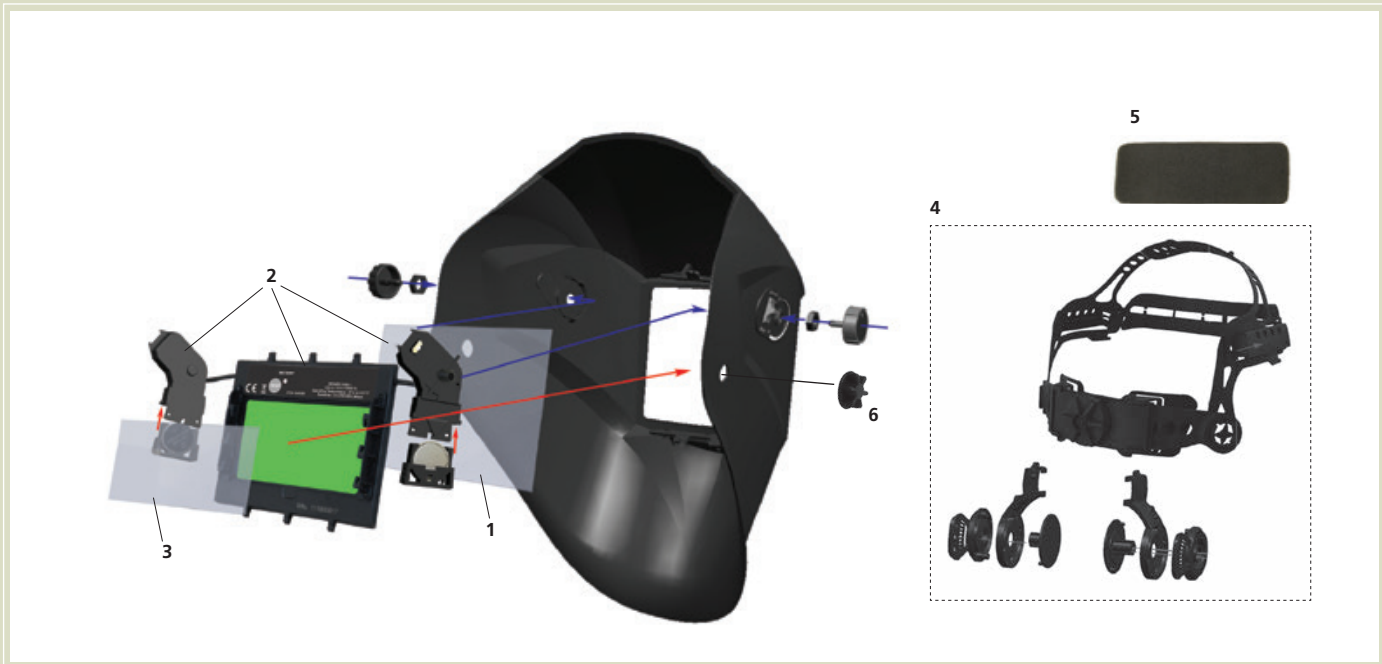
Viewing area	98 x 55 mm
Light state shade	DIN 4
Dark state shade	DIN 9–13, infinitely variable
UV / IR-protection	always active, DIN 16
Filter quality classification	1/1/1/1
Response time (light to dark)	1/20'000 sec
Opening delay (dark to light)	0.3 – 0.9 sec, adjustable
Sensitivity of the optoelectronic sensors	infinitely variable
Operation mode switch	Autodarkening function can be deactivated for grinding
Power supply	solar cell and lithium batteries (changeable)
Operating temperature	- 5°C to 55°C
Weight	470 g
Warranty	1 year
Technical specifications	EN379, EN175, ANSI / ISEA Z87.1

Ordering information

TBi ArcVisorPlus, (1 helmet with box) 714P101024

TBi ArcVisorPlus, (12 helmets with box) 714P101023

Overview



Pos. Description Part. no.

Spare parts

1	Outside protective shield	714P002073
2	Autodarkening filter TBi Industries, DIN 9–13	714P102092
3	Inside protective shield	714P002074
4	Head gear for helmet (without pad)	714P002075
5	Pad	714P002077
6	Mounting set for head gear outside	714P002076

Controls

Opening delay

The switch *Delay* serves to adjust the opening delay. This is the timespan after which the filter automatically opens again when no arc is detected. This feature prevents premature opening of the filter when the arc is difficult to detect, or when the weld is still hot and glowing right after welding.

Operation mode

The mode switch deactivates the auto-darkening function of the filter. In this setting, the helmet can also be used for grinding.

Dark shade setting

During the welding process, the intensity of the darkening can be infinitely adjusted from DIN 9 to DIN 13 by turning the knob at the outside of the mask. The shade has to be chosen according to the welding process and can be easily adapted to the job.

Sensitivity of the sensors

The sensitivity of the light sensors can be infinitely adjusted with the knob *Sensitivity*. The reaction of the filter changes correspondingly and unwanted activation of the dark shade by surrounding light is avoided.

